

Floor Plan: Elite 6 28523C

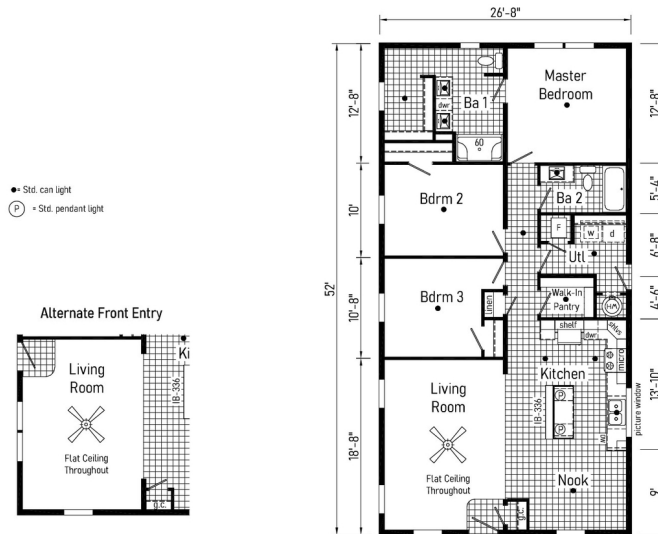
3 Bedrooms, 2 Bathrooms, 1387 Square Feet

Series: Blazer Select | Type: Modular or Manufactured | Style: Double-wide

SCAN FOR
MORE DETAILS



FLOOR PLAN



Because we have a continuous product updating and improvement process, prices, plans, dimensions, features, materials, specifications and availability are subject to change without notice or obligation. Please refer to working drawings for actual dimensions. Renderings and floor plans are artist's depictions only and may vary from the completed home. Square footage calculations and room dimensions are approximate subject to industry standards. Some features shown are optional.

*Pricing information is provided for informational purposes only, actual prices may vary and may only be obtained from your retail dealer. Pricing does not include taxes, site preparation costs beyond the services listed or delivery outside of the stated delivery area. Nothing contained herein or on the Web Site constitutes an offer to sell any product or service, and no binding obligations will arise until you and your retail model center have executed final sales documents. We reserve the right to change prices at any time and without notice or obligation. Not responsible for typos. Please contact the retailer to confirm the most current price.

Cavco - Clarion

20898 Paint Blvd, Shippenville, PA 16254



cavcohomes.com

Copyright © 2025 Cavco Industries, Inc. All rights reserved.

Floor Plan: Elite 6 28523C

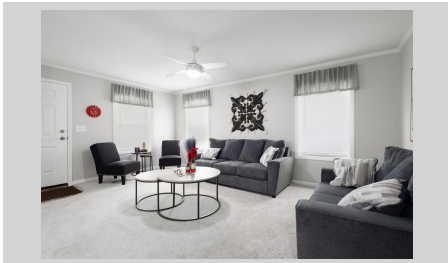
3 Bedrooms, 2 Bathrooms, 1387 Square Feet

Series: Blazer Select | Type: Modular or Manufactured | Style: Double-wide

**SCAN FOR
MORE DETAILS**



PHOTOS AND RENDERINGS



Scan QR Code above for more photos and renderings.

Cavco - Clarion

20898 Paint Blvd, Shippenville, PA 16254



cavcohomes.com

Copyright © 2025 Cavco Industries, Inc. All rights reserved.



COMMODORE BLAZER

Interior

Flat Ceiling Throughout
Stipple Ceiling
8' Sidewall Height
Edgewater Carpet
Rebond Carpet Pad
Tackstrip Carpet Installation
Shaw Vinyl Flooring
Vinyl Flooring Entry Foyer
Vinyl Wall Coverings on Gypsum
Pre-Hung White 2-Panel Interior
Doors with 2 Mortised Hinges
30" Interior Passage Doors
Metal Interior Passage Sets
Floor Mount Door Stops
Smoke Detectors with Battery
Back-Up
Wire Shelving in Closets & Above W/D
Designer-Coordinated Window
Treatments
LED Lights Throughout
Ceiling Fan in Living Room

Kitchen

KCMA Certified Cabinets
Mission Cabinet Doors
Concealed Cabinet Hinges
Brushed Nickel Cabinet Pull Hardware T/O
Lined Base & Overhead Cabinets
Kitchen Island
Soft Close Undermount Drawer Guides
Base Shelves in Cabinets
Laminate Countertops
4" Laminate Backsplash
Stainless Steel Sink - 33x22x8
Pull Down Brushed Nickel Kitchen Faucet
(2) Pendant Lights over Island
Cubbies over Cabinets

Appliances

20 CuFt, Stainless Steel Refrigerator w/Top
Freezer
30" Stainless Steel Deluxe Electric Range
Stainless Steel Dishwasher 4 Cycle
Stainless Steel Over the Range Microwave

Baths

60" Fiberglass Shower - Master Bath
60" One Piece Fiberglass Tub/Shower -Bath 2
1.6 Gallon Per Flush Elongated Toilets
Laminate Countertops
4" Laminate Backsplash
Lighted Vent Fan in Each Bath
Mission Cabinet Doors
Concealed Cabinet Hinges
Brushed Nickel Cabinet Pull Hardware
Base Shelf in Vanities
36" High Vanities
Square China Lavs
Double Lav Sinks - Master Bath
Structured Flow Brushed Nickel Faucets

Bedrooms

LED Lights
Egress Window Each Bedroom
Wire Shelving in Wardrobes
Recessed 6" LED Light
in All Walk-In Closets & Pantry

Utilities

Plumbed & Wired for Washer
with Quarter Turn Valve
Vented and Wired for Dryer
200 AMP Electrical Service
Copper Wiring Throughout
30 Gallon Electric Water Heater
with Pan
Water Shut Off Throughout
Main Water Shut off in Utility
Electric Furnace w/ Grilled Door
Air Exchange System for Furnace
Aluminum Heat Ducts
In-Floor Cross-Over Heating System
Air Conditioner Ready Thermostat
w/ 5-Wires

Exterior

Gatsby Light at Front & Rear Door
GFI-Protected Exterior Receptacle
(1) Exterior Water Faucet
Vinyl Dutch Lap Siding
OSB with Wind Wrap
Architectural Shingle Roof with
4" Eaves on Single Section Homes
10" Eaves on Ranch Homes
Ridgevent Roof Ventilation System
6-Panel Fiberglass Front Door 38x80
1-Lite Rear Door 34x80
12" Raised Panel Shutters on
Front Door Side

Construction

Transverse Floor System
2x6 - 14' & 28' Wide
2x8 - 16' & 32' Wide
2x6 Exterior Walls on 16" Centers**
20# Roof Load
¾" OSB T&G Floor Decking
Recessed Frame
2 Adjustable Outriggers

Energy Efficient Standards

Vinyl Insulated Low-E Windows
R-22 Fiberglass in Floor
R-19 Fiberglass in Walls
R-25 Avg. Blown in Ceiling-Single
R-28 Avg. Blown in Ceiling-Multi

**NOTE: Spacing for Framing Members may vary due to Design Requirements



All descriptive representations of the products on this flyer are believed to be correct at the time of publication. However, due to continued product improvement and changes in suppliers, design and production, accuracy cannot be guaranteed. Therefore, equipment, colors, material specifications, prices and model availability are subject to change without notice.