

## Floor Plan: Regulus 28643D

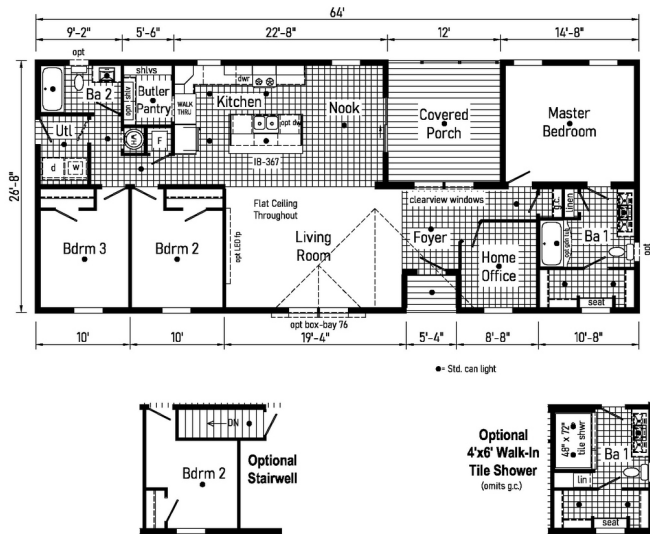
3 Bedrooms, 2 Bathrooms, 1707 Square Feet

Series: Astro Creations | Type: Modular or Manufactured | Style: Double-wide

SCAN FOR  
MORE DETAILS



## FLOOR PLAN



Because we have a continuous product updating and improvement process, prices, plans, dimensions, features, materials, specifications and availability are subject to change without notice or obligation. Please refer to working drawings for actual dimensions. Renderings and floor plans are artist's depictions only and may vary from the completed home. Square footage calculations and room dimensions are approximate subject to industry standards. Some features shown are optional.

\*Pricing information is provided for informational purposes only, actual prices may vary and may only be obtained from your retail dealer. Pricing does not include taxes, site preparation costs beyond the services listed or delivery outside of the stated delivery area. Nothing contained herein or on the Web Site constitutes an offer to sell any product or service, and no binding obligations will arise until you and your retail model center have executed final sales documents. We reserve the right to change prices at any time and without notice or obligation. Not responsible for typos. Please contact the retailer to confirm the most current price.

## Cavco - Clarion

20898 Paint Blvd, Shippenville, PA 16254



cavcohomes.com

Copyright © 2025 Cavco Industries, Inc. All rights reserved.

**Floor Plan: Regulus 28643D**

3 Bedrooms, 2 Bathrooms, 1707 Square Feet

Series: Astro Creations | Type: Modular or Manufactured | Style: Double-wide

**SCAN FOR  
MORE DETAILS**



**PHOTOS AND RENDERINGS**



Scan QR Code above for more photos and renderings.

**Cavco - Clarion**

20898 Paint Blvd, Shippenville, PA 16254



[cavcohomes.com](http://cavcohomes.com)

Copyright © 2025 Cavco Industries, Inc. All rights reserved.





# Creations

## COMMODORE ASTRO

### **Interior**

Flat Ceiling Throughout  
Stipple Ceiling  
8' Sidewall Height  
Shaw Edgewater Carpet  
Rebond Carpet Pad  
Tackstrip Carpet Installation  
Shaw Vinyl Floor  
Vinyl Wall Coverings on Gypsum  
LED Flush Mount Lighting  
Pre-Hung White 2-Panel Interior  
Doors with 2 Mortised Hinges  
30" Interior Passage Doors  
Metal Interior Passage Sets  
Floor Mount Door Stops  
Smoke Detectors with Battery  
Back-Up  
Wire Shelving in Closets  
Designer-Coordinated Window  
Treatments

### **Kitchen**

KCMA Certified Cabinetry  
Mission Cabinet Doors  
Concealed Cabinet Hinges  
Brushed Nickel Cabinet Pull Hardware  
42" Overhead Cabinets  
Cabinet Crown Moulding  
Lined Base & Overhead Cabinets  
Soft Close Undermount Drawer Guides  
Base and Center Shelves in Cabinets  
Laminate Countertops  
4" Laminate Backsplash  
Stainless Steel Sink - 33x22x8  
Brushed Nickel Pull Down  
Kitchen Faucet

### **Appliances**

18 Cubic Foot, Black No-Frost Refrigerator  
30" Black Deluxe Gas Range  
Power Range Hood with Light

### **Baths**

60" Fiberglass Tub/Shower - Bath 1  
1.6 Gallon Per Flush Elongated Toilets  
Laminate Countertops  
4" Laminate Backsplash  
Lighted Vent Fan in Each Bath  
Mission Cabinet Doors  
Concealed Cabinet Hinges  
Brushed Nickel Cabinet Pull Hardware  
Base Shelf in Vanities  
Square China Lavs  
36" High Vanities  
LED Lights over Tub/Showers  
Empire Brushed Nickel Faucets

### **Bedrooms**

Switched Receptacles  
Egress Window Each Bedroom  
Wire Shelving in Wardrobes  
Recessed 6" LED Light (each bedroom)  
and All Walk-In Closets

### **Utilities**

Plumbed & Wired for Washer  
with Quarter Turn Valve  
Vented and Wired for Dryer  
100 AMP Expanded Electrical Service  
Copper Wiring Throughout  
30 Gallon Electric Water Heater with Pan  
Gas Furnace w/ Grilled Door  
Air Exchange System for Furnace  
Aluminum Heat Ducts  
In-Floor Cross-Over Heating System  
on Sectionals  
Air Conditioner Thermostat w/ 5-Wires  
Main Water Line Shut-Off Valve

### **Exterior**

Gatsby Light at Front & Rear Door  
GFI-Protected Exterior Receptacle  
Vinyl Dutch Lap Siding  
OSB with Wind Wrap  
Architectural Shingle Roof with  
4" Eaves on Single Section Homes  
10" Eaves on Ranch Homes  
Ridgevent Roof Ventilation System  
6-Panel Fiberglass Front Door 38x80  
6-Panel Fiberglass Rear Door 34x80  
Window Lineals on Front Door Side

### **Construction**

Transverse Floor System  
2x6 - 14' & 28' Wide  
2x8 - 16' & 32' Wide  
2x6 Exterior Walls on 16" Centers\*\*  
20# Roof Load  
¾" OSB T&G Floor Decking  
Recessed Frame Design

### **Energy Efficient Standards**

Vinyl Insulated Low-E Windows  
R-22 Fiberglass in Floor  
R-19 Fiberglass in Walls  
R-25 Avg. Blown in Ceiling-Single  
R-28 Avg. Blown in Ceiling- Multi

\*\*NOTE: Spacing for Framing Members may vary due to Design Requirements

9/17/25 | 2026 Product



All descriptive representations of the products on this flyer are believed to be correct at the time of publication. However, due to continued product improvement and changes in suppliers, design and production, accuracy cannot be guaranteed. Therefore, equipment, colors, material specifications, prices and model availability are subject to change without notice.

**Modular Features:**

Floorplan may be altered based on building code.  
Primed / Finished Drywall Throughout  
40# Roof Load  
5/12 Roof Pitch w/Ice Shield  
Architectural Shingles  
90 MPH Wind Zone Exp. C  
2x10 Floor Joist  
2x4 Interior Walls  
Additional Exterior Receptacle  
(1) Exterior Faucet  
Non Gridded Argon Windows Low-E  
R-31 Ceiling Insulation  
Water Shut Off Where Accessible  
200 AMP Panel Box  
(1) Phone Jack  
Hi-Efficiency Furnace  
Hardwood Cabinets w/Hardwood Stiles  
No Blinds or Curtains  
White Profile Moulding Package  
Structured Flow Brushed Nickel Metal Faucets  
Square China Lav Sinks  
Perimeter Heat  
Fiberglass One Piece Tub/Shower Combo

*Premier*

**Home Enhancement Pack**

Nook Light  
Vinyl Foyer  
Hardwood Cabinet Doors, Stiles & Cabinet Crown  
Drawer Over Door Cabinetry In Kitchen  
MO-219 over Washer Dryer Area  
Profile or Artisan Moulding Package  
Perimeter Heat  
Structure Flow Faucets  
Exterior Faucet  
3-Lite Front Door  
1-Lite Rear Door  
40 Gallon Hot Water Heater  
Water Shut-Offs Throughout  
10 Year Warranty

*Premier Plus*

**Home Enhancement Pack**

Everything listed above plus:

Drywall Throughout  
16" O.C. Floor Joist  
Hot Water Heater Cover  
Black Framed Mirrors – Bathrooms  
2-Light Vanity Fixture – Bathrooms  
Deluxe Drapes  
Soft Close Hinged Cabinet Doors  
Hardwood Under Cabinet Moulding  
Galley Sink