

Floor Plan: Anilam 28643C

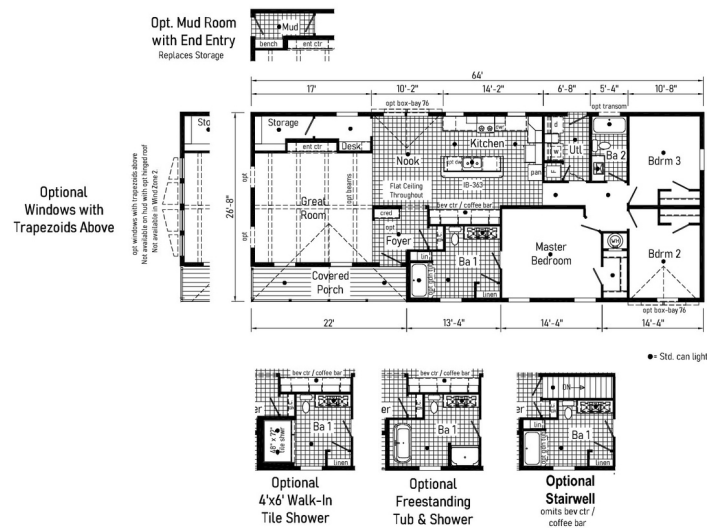
3 Bedrooms, 2 Bathrooms, 1707 Square Feet

Series: Astro Creations | Type: Modular or Manufactured | Style: Double-wide

SCAN FOR
MORE DETAILS



FLOOR PLAN



Because we have a continuous product updating and improvement process, prices, plans, dimensions, features, materials, specifications and availability are subject to change without notice or obligation. Please refer to working drawings for actual dimensions. Renderings and floor plans are artist's depictions only and may vary from the completed home. Square footage calculations and room dimensions are approximate subject to industry standards. Some features shown are optional.

*Pricing information is provided for informational purposes only, actual prices may vary and may only be obtained from your retail dealer. Pricing does not include taxes, site preparation costs beyond the services listed or delivery outside of the stated delivery area. Nothing contained herein or on the Web Site constitutes an offer to sell any product or service, and no binding obligations will arise until you and your retail model center have executed final sales documents. We reserve the right to change prices at any time and without notice or obligation. Not responsible for typos. Please contact the retailer to confirm the most current price.

Cavco - Clarion

20898 Paint Blvd, Shippenville, PA 16254



cavcohomes.com

Copyright © 2025 Cavco Industries, Inc. All rights reserved.



Creations

COMMODORE ASTRO

Interior

Flat Ceiling Throughout
Stipple Ceiling
8' Sidewall Height
Shaw Edgewater Carpet
Rebond Carpet Pad
Tackstrip Carpet Installation
Shaw Vinyl Floor
Vinyl Wall Coverings on Gypsum
LED Flush Mount Lighting
Pre-Hung White 2-Panel Interior
Doors with 2 Mortised Hinges
30" Interior Passage Doors
Metal Interior Passage Sets
Floor Mount Door Stops
Smoke Detectors with Battery
Back-Up
Wire Shelving in Closets
Designer-Coordinated Window
Treatments

Kitchen

KCMA Certified Cabinetry
Mission Cabinet Doors
Concealed Cabinet Hinges
Brushed Nickel Cabinet Pull Hardware
42" Overhead Cabinets
Cabinet Crown Moulding
Lined Base & Overhead Cabinets
Soft Close Undermount Drawer Guides
Base and Center Shelves in Cabinets
Laminate Countertops
4" Laminate Backsplash
Stainless Steel Sink - 33x22x8
Brushed Nickel Pull Down
Kitchen Faucet

Appliances

18 Cubic Foot, Black No-Frost Refrigerator
30" Black Deluxe Gas Range
Power Range Hood with Light

Baths

60" Fiberglass Tub/Shower - Bath 1
1.6 Gallon Per Flush Elongated Toilets
Laminate Countertops
4" Laminate Backsplash
Lighted Vent Fan in Each Bath
Mission Cabinet Doors
Concealed Cabinet Hinges
Brushed Nickel Cabinet Pull Hardware
Base Shelf in Vanities
Square China Lavs
36" High Vanities
LED Lights over Tub/Showers
Empire Brushed Nickel Faucets

Bedrooms

Switched Receptacles
Egress Window Each Bedroom
Wire Shelving in Wardrobes
Recessed 6" LED Light (each bedroom)
and All Walk-In Closets

Utilities

Plumbed & Wired for Washer
with Quarter Turn Valve
Vented and Wired for Dryer
100 AMP Expanded Electrical Service
Copper Wiring Throughout
30 Gallon Electric Water Heater with Pan
Gas Furnace w/ Grilled Door
Air Exchange System for Furnace
Aluminum Heat Ducts
In-Floor Cross-Over Heating System
on Sectionals
Air Conditioner Thermostat w/ 5-Wires
Main Water Line Shut-Off Valve

Exterior

Gatsby Light at Front & Rear Door
GFI-Protected Exterior Receptacle
Vinyl Dutch Lap Siding
OSB with Wind Wrap
Architectural Shingle Roof with
4" Eaves on Single Section Homes
10" Eaves on Ranch Homes
Ridgevent Roof Ventilation System
6-Panel Fiberglass Front Door 38x80
6-Panel Fiberglass Rear Door 34x80
Window Lineals on Front Door Side

Construction

Transverse Floor System
2x6 - 14' & 28' Wide
2x8 - 16' & 32' Wide
2x6 Exterior Walls on 16" Centers**
20# Roof Load
¾" OSB T&G Floor Decking
Recessed Frame Design

Energy Efficient Standards

Vinyl Insulated Low-E Windows
R-22 Fiberglass in Floor
R-19 Fiberglass in Walls
R-25 Avg. Blown in Ceiling-Single
R-28 Avg. Blown in Ceiling- Multi

**NOTE: Spacing for Framing Members may vary due to Design Requirements

9/17/25 | 2026 Product



All descriptive representations of the products on this flyer are believed to be correct at the time of publication. However, due to continued product improvement and changes in suppliers, design and production, accuracy cannot be guaranteed. Therefore, equipment, colors, material specifications, prices and model availability are subject to change without notice.

Modular Features:

Floorplan may be altered based on building code.
Primed / Finished Drywall Throughout
40# Roof Load
5/12 Roof Pitch w/Ice Shield
Architectural Shingles
90 MPH Wind Zone Exp. C
2x10 Floor Joist
2x4 Interior Walls
Additional Exterior Receptacle
(1) Exterior Faucet
Non Gridded Argon Windows Low-E
R-31 Ceiling Insulation
Water Shut Off Where Accessible
200 AMP Panel Box
(1) Phone Jack
Hi-Efficiency Furnace
Hardwood Cabinets w/Hardwood Stiles
No Blinds or Curtains
White Profile Moulding Package
Structured Flow Brushed Nickel Metal Faucets
Square China Lav Sinks
Perimeter Heat
Fiberglass One Piece Tub/Shower Combo

Premier

Home Enhancement Pack

Nook Light
Vinyl Foyer
Hardwood Cabinet Doors, Stiles & Cabinet Crown
Drawer Over Door Cabinetry In Kitchen
MO-219 over Washer Dryer Area
Profile or Artisan Moulding Package
Perimeter Heat
Structure Flow Faucets
Exterior Faucet
3-Lite Front Door
1-Lite Rear Door
40 Gallon Hot Water Heater
Water Shut-Offs Throughout
10 Year Warranty

Premier Plus

Home Enhancement Pack

Everything listed above plus:

Drywall Throughout
16" O.C. Floor Joist
Hot Water Heater Cover
Black Framed Mirrors – Bathrooms
2-Light Vanity Fixture – Bathrooms
Deluxe Drapes
Soft Close Hinged Cabinet Doors
Hardwood Under Cabinet Moulding
Galley Sink